

DISCLAIMER

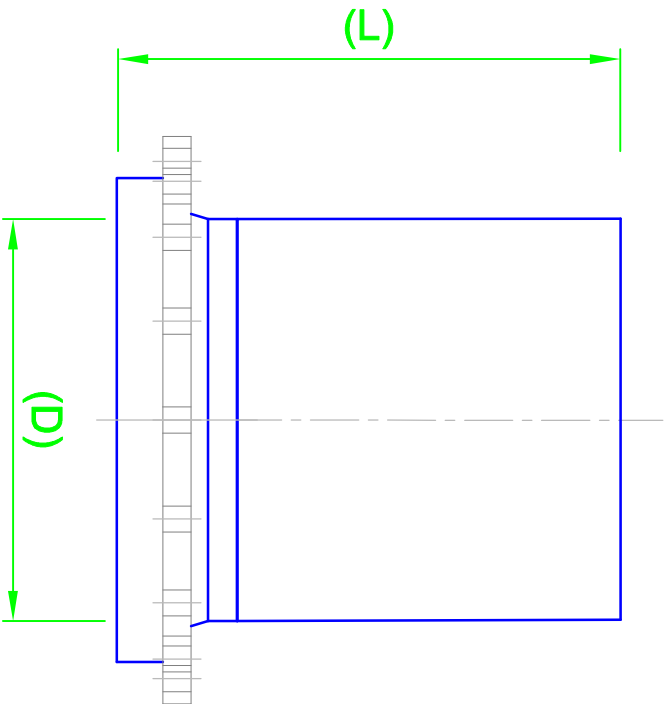
DO NOT SCALE FROM THIS DRAWING. USE FIGURED DIMENSIONS ONLY.

DIMENSIONS SUBJECT TO MANUFACTURING TOLERANCES

PIPE DIA (D)	LENGTH (L)
Ø110	500
Ø125	500
Ø140	500
Ø160	500
Ø180	500
Ø200	500
Ø225	500
Ø250	500
Ø280	500
Ø315	500
Ø355	500
Ø400	500
Ø450	500
Ø500	500
Ø560	1000
Ø630	1000
Ø710	1000
Ø800	1000
Ø900	1000
Ø1000	1000
Ø1200	1200

PRODUCT DRAWING

**ALL BACKING RINGS ARE DRILLED TO BS4504
PN16
UNLESS OTHERWISE SPECIFIED**





L I M I T E D

Canklow Meadows Industrial Estate
West Bawtry Road
Rotherham, S60 2XL
Tel: +44(0) 01709 786 970 Fax: +44(0) 01709 378 970
Email: info@plasflow.com Web: www.plasflow.com



Certificate No.: 06286

Drawing Title:

STANDARD PUPPED STUB FLANGE ASSEMBLY

Drawn By:	Checked By:	Approved By:	Date:
CAO			25.04.06
CAD Ref. Number:	Drawing No:	Revision:	Size:
SD007	0	A4	1/10
Scale:			

This drawing is the property of PLASFLOW LIMITED and must not be used, loaned, reproduced or disclosed in whole or in part to third parties without the company's written permission.